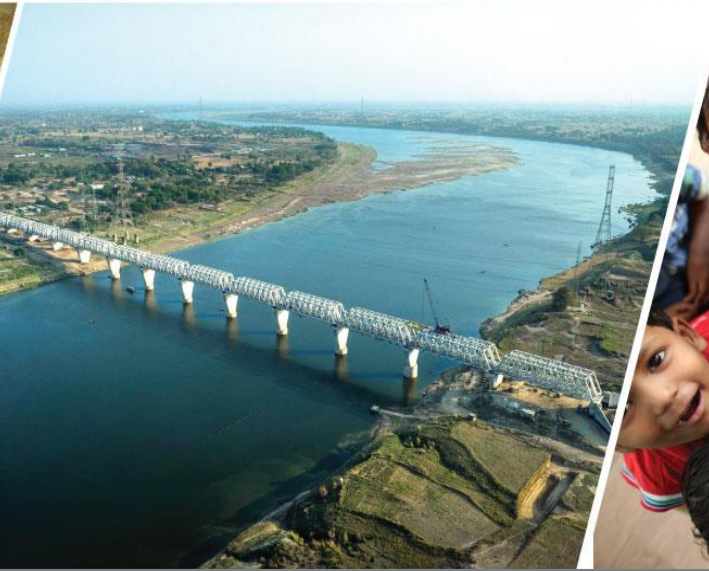
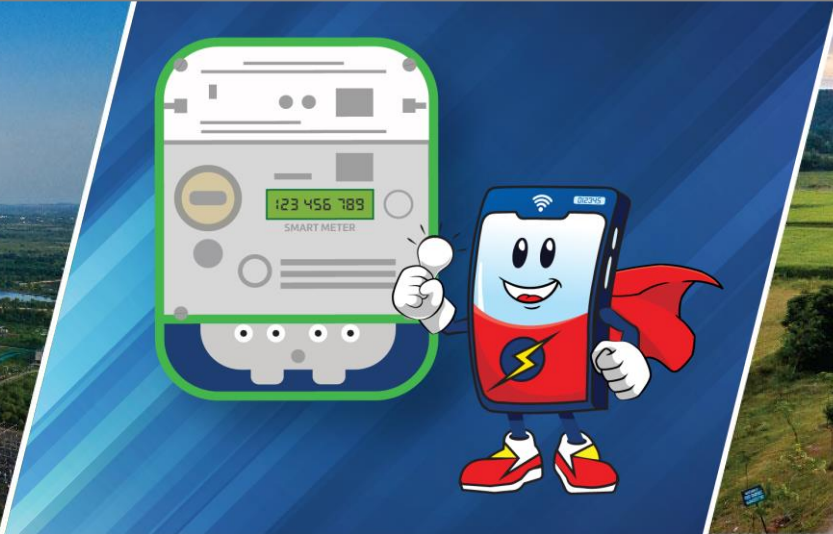


GMR Power and Urban Infra Ltd. (GPUIL)



Investor Presentation – Q3FY26

DISCLAIMER

All statements, graphics, data, tables, charts, logos, names, figures and all other information (“Contents”) contained in this document (“Material”) is prepared by GMR Power and Urban Infra Limited (“Company”) solely for the purpose of this Material and not otherwise. This Material is prepared as on the date mentioned herein which is solely intended for reporting the developments of the Company to the investors of equity shares in the Company as on such date, the Contents of which are subject to change without any prior notice. The Material is based upon information that we consider reliable, but we do not represent that it is accurate or complete.

Neither the Company, its subsidiaries and associate companies (“GMR Group”), nor any director, member, manager, officer, advisor, auditor and other persons (“Representatives”) of the Company or the GMR Group provide any representation or warranties as to the correctness, accuracy or completeness of the Contents and this Material. It is not the intention of the Company to provide a complete or comprehensive analysis or prospects of the financial or other information within the Contents and no reliance should be placed on the same as this Material has not been independently verified by any person.

NONE OF THE COMPANY, THE GMR GROUP AND THE REPRESENTATIVES OF THE COMPANY AND THE GMR GROUP ACCEPT ANY LIABILITY WHATSOEVER FROM ANY LOSS OR DAMAGE HOWSOEVER ARISING FROM ANY CONTENTS OR OTHERWISE ARISING OUT OF OR IN CONNECTION WITH THIS MATERIAL.

This Material is published and available on the Company’s website www.gmrpui.com which is subject to the laws of India, and is solely for information purposes only and should not be reproduced, retransmitted, republished, quoted or distributed to any other person whether in whole or in part or for any other purpose or otherwise.

Any reproduction, retransmission, republishing or distribution of this Material or the Contents thereof in certain jurisdictions may be restricted by law and persons who come into possession of this Material should observe such laws and restrictions if any.

This Material and any discussions which follows may contain ‘forward looking statements’ relating to the Company and the GMR Group and may include

statements relating to future results of operation, financial condition, business prospects, plans and objectives, are based on the current beliefs, assumptions, expectations, estimates, and projections of the directors and management of the Company about the business, industry and markets in which the Company and the GMR Group operates and such statements are not guarantees of future performance, and are subject to known and unknown risks, uncertainties, and other factors, some of which are beyond the Company’s or the GMR Group’s control and difficult to predict, that could cause actual results, performance or achievements to differ materially from those in the forward looking statements. Such statements are not, and should not be construed, as a representation as to future performance or achievements of the Company or the GMR Group. In particular, such statements should not be regarded as a projection of future performance of the Company or the GMR Group. It should be noted that the actual performance or achievements of the Company and the GMR Group may vary significantly from such statements. All forward-looking statements are not predictions and may be subject to change without notice.

This Material is not and does not constitute any offer or invitation or recommendation or advise to purchase, acquire or subscribe to shares and other securities of the Company or the GMR Group and not part of this Material shall neither form the basis of or part of any contract, commitment or investment decision nor shall be relied upon as a basis for entering into any contract, commitment or investment decision in relation thereto. Prospective investors in the Company or the GMR Group should make its own investment decisions and seek professional advice including from legal, tax or investment advisors before making an investment decision in shares or other securities of the Company or the GMR Group. Remember, investments are subject to risks including the risk of loss of the initial principal amount invested; past performance is not indicative of future results.

REGULATORY AUTHORITIES IN INDIA, THE UNITES STATES OF AMERICA, OR OTHER JURISDICTIONS, INCLUDING THE SECURITIES AND EXCHANGE BOARD OF INDIA (“SEBI”) AND THE SECURITIES AND EXCHANGE COMMISSION, HAVE NEITHER APPROVED OR DISAPPROVED THIS MATERIAL OR DETERMINED IF THIS MATERIAL IS TRUTHFUL OR COMPLETE. ANY REPRESENTATION TO THE CONTRARY MAY CONSTITUTE A CRIMINAL OFFENSE.

Particulars	Pg. No.
Overview	3 – 4
Key Business Highlights	5 – 6
Financial Performance	7 – 12
- Energy Business	13 – 15
- Transportation and Urban Infrastructure Business	16 – 20
Strategy and Way Forward	21 – 24
ESG Practices	25 – 28
Annexures	30 – 37



Energy



2 Thermal Power Plants

- Operational : 1,650 MW
- Under-development : 350 MW



Hydro Power Plants

- Under-development: 1,425 MW



Solar Power Plants

- Operational: 31 MW



2 Wind Power Plants

- Operational: 3.4 MW

In Process of Disposal¹

- Gas Plants: 1,156 MW
Commissioned but not operational



Smart Metering



Advanced Metering Infrastructure Project

- 7.57 Mn Smart Meters



Smart Mobility



EV Charging Solutions



Highways & EPC



2 Annuity Projects

- 133 kms



1 Toll Project

- 35 kms



EPC Projects*

- DFCC Projects Eastern Corridor
 - ✓ Package 201 and 202: 417 km
 - ✓ Package 301 and 302: 221 km

* Project completed and handed over to DFCCIL



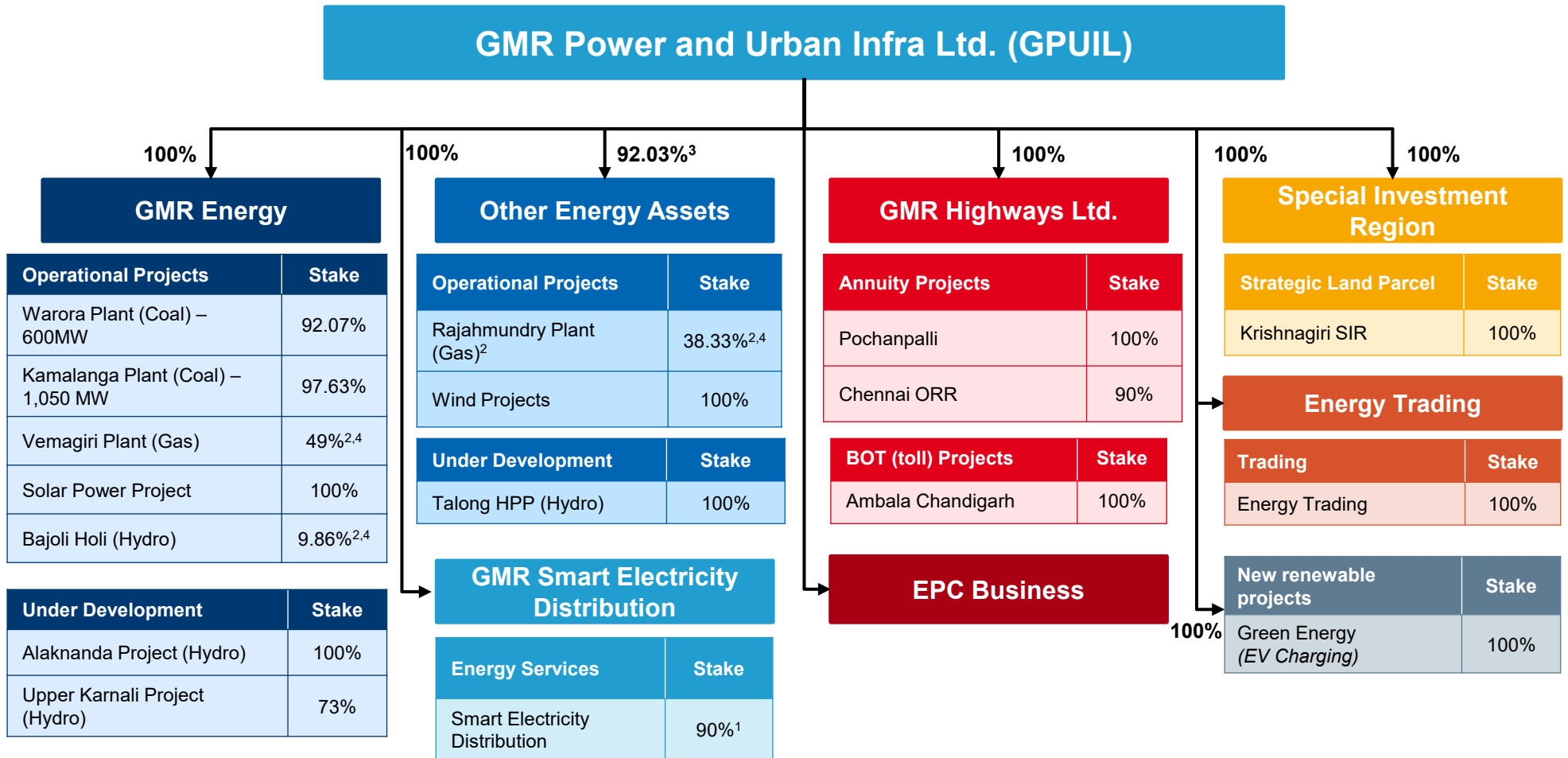
Urban Infra



Special Investment Region (SIR)

- ~387 acres in Tamil Nadu
- Land at strategic location

Corporate Structure (as of 31 Dec'25)



Note: Ownership includes both direct & indirect holding

¹ GMR Smart Electricity Distribution (GSEDPL) holds 90% of the equity capital of SPVs implementing the smart metering projects as per corporate announcement dated 19 Jun'24

² Projects are accounted as JVs and associates

³ GPUIL holds 92.03% stake in GMR Generation Assets Limited (GGAL) which operates a wind project in Gujarat through wholly owned subsidiary. Another wind project in Tamil Nadu is held 100% by GPUIL

⁴ Subsequent to Framework agreement executed for divestment of stake in Bajoli Holi (79.86%), Vemagiri (51%) and Rajahmundry (51%) projects

Preferential Issuance of Equity Shares and Warrants¹

- The Board of Directors of GPUIL on 17 Dec'25 approved issuance of Equity shares & Convertible Warrants of the Company on a preferential issue basis for a **total consideration of ~INR 12bn**. This was followed by approval from GPUIL Shareholders on 16 Jan'26 and In-Principle approval from Stock Exchanges
- Upon securing above approvals, GPUIL allotted the said equity shares and warrants as follows:
 - **~66.18mn Equity Shares** having face value of Rs. 5/- each, at an **Issue Price of Rs. 120.88/-**, upon receipt of entire **consideration amount (~INR 8bn)**
 - **~33.09mn Warrants** having face value of Rs. 5/- each at an **Issue Price of Rs. 120.88/-**, after receipt of 25% of the consideration amount (**~INR 1bn**)
 - Warrants are **convertible into Equity Shares** within a period of **18 months** from the date of allotment i.e. 28 Jan'26, upon payment of the balance 75% of amount (**~INR3 bn**) at conversion
- Consequently, the **total issued shares** of GPUIL increased **from ~715mn to ~781mn** and **will further increase to ~814mn** post conversion of warrants

Refinancing of GMR Kamalanga (GKEL) Debt²

- GKEL secured a senior loan facility of **INR 27bn** and used the proceeds to repay existing lenders
- This refinancing **reduced GKEL's average cost** of borrowing **from ~12.15% p.a. to 9.50% p.a.** with a provision to **further reduce** the same **to 9.25% p.a.** subject to a credit rating upgrade
- **Implication: ~INR 720-750mn** estimated savings in interest cost during first full year of operations

Receipt of claim amount from Haryana DISCOM

- GKEL filed claim with Haryana DISCOM following the Supreme Court's³ dismissal of Civil Appeals filed by the Distribution Licensees of Haryana and GRIDO
- Subsequently, Haryana DISCOM **paid the entire claim amount of INR 11.4bn**

¹ Corporate Announcements dated 17 Dec'25 and 28 Jan'26; ² Corporate Announcement dated 22 Dec'25; ³ Corporate Announcement dated 11 Sep'25

Renewable Portfolio Expansion¹

- Incorporated two subsidiaries under GMR Energy Ltd:
 - **GMR Kalinga Solar Power Limited** – For development of solar power project, with a capacity of 10 MW in Kamalanga, Odisha
 - Executed **PPA with Grasim Industries** which will also invest INR 36mn to acquire 29% equity stake in GMR Kalinga Solar Power
 - **GMR Utkal Solar Power Limited** – For development of another solar power project in Kamalanga

Operational Performance

- Installed ~30 lakh smart meters across all project areas as of 26 Jan'26
- Achieved PLF of 84% and 83% in Warora and Kamalanga respectively in Q3FY26 against an All India Private IPP avg. PLF of ~61.6%
- Traffic in Ambala Chandigarh toll road project fell 15.2% YoY in Q3FY26

¹ Corporate Announcements dated 24 Nov'25 and 31 Dec'25

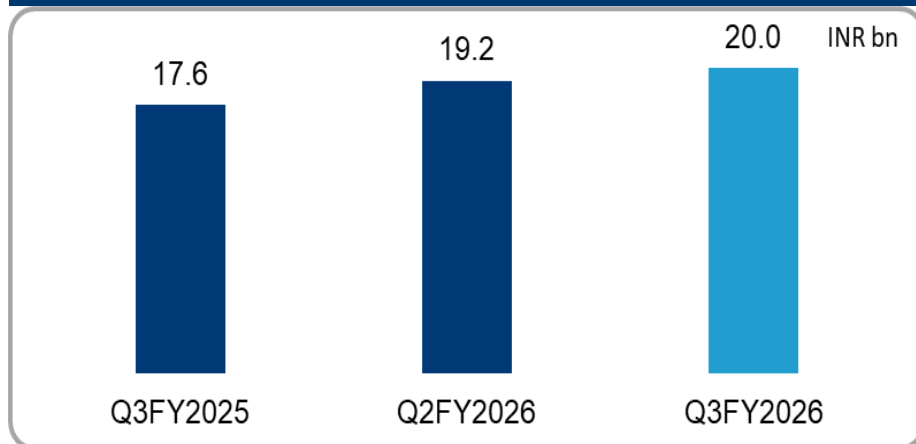
PERFORMANCE HIGHLIGHTS



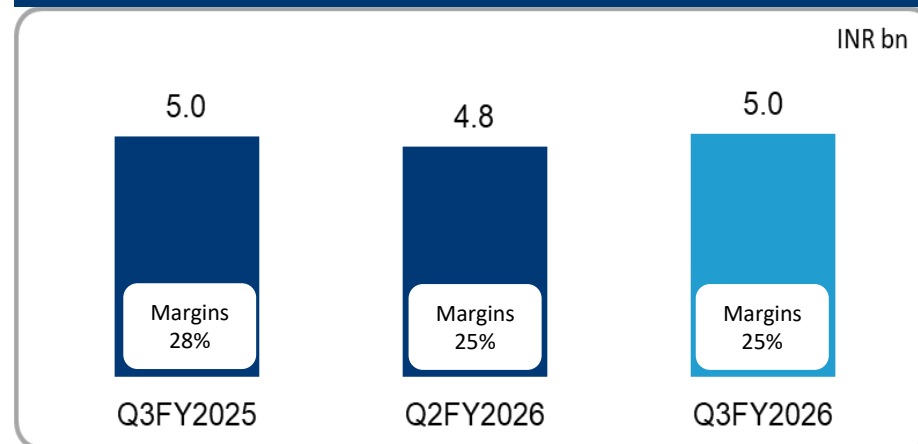
Consolidated Financials

- **Total Income**
 - Q3FY26: ▲ 14% YoY; ▲ 4% QoQ to INR 20.0bn. 9MFY26: ▲ 14% YoY to INR 56.9bn
 - YoY increase due to smart meter revenue (INR 4.3bn in Q3FY26 vs INR 1.7bn in Q3FY25)
 - QoQ increase mainly driven by increase in smart meter revenue (▲ by ~INR 1.5bn in Q3FY26 vs Q2FY26) partially offset by decrease in energy trading revenue (▼ by ~INR 1.0bn in Q3FY26 vs Q2FY26)
- **EBITDA**
 - Q3FY26: ▲ 1% YoY; ▲ 6% QoQ to INR 5.0bn with EBITDA margins at 25%. 9MFY26: ▼ 11% YoY to INR 15.0 bn
 - Other expenses include one-time expense in Energy business
- **Net Profit After Tax¹**
 - Loss of INR 1.6bn in Q3FY26 vs loss of INR 0.9bn in Q3FY25
 - Adj. for exceptional items & non-cash finance costs, loss of INR 141mn in Q3FY26 vs loss of INR 585mn in Q3FY25

Total Income



EBITDA



Note: ¹ From continuing operations

GPUIL Operational Performance Highlights

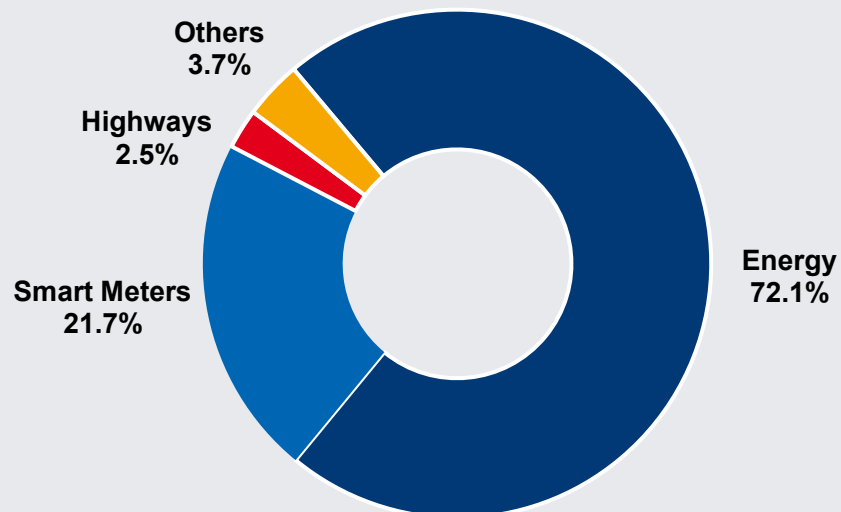


	Energy - PLFs			
	Q3FY2025	Q3FY2026	9MFY2025	9MFY2026
Warora	86%	84%	82%	83%
Kamalanga	82%	83%	84%	85%

	Highways – Avg. Daily Traffic ('000)			
	Q3FY2025	Q3FY2026	9MFY2025	9MFY2026
Ambala - Chandigarh	50.3	42.6	48.9	40.7

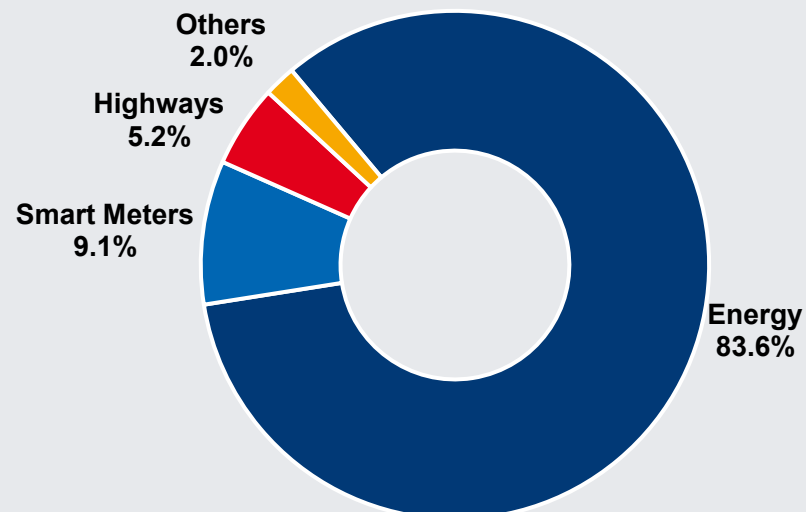
Q3FY26 Consolidated Total Income

INR 20.0bn



Q3FY26 Consolidated EBITDA

INR 5.0bn



Key Energy Assets - Operational & Financial Highlights YoY



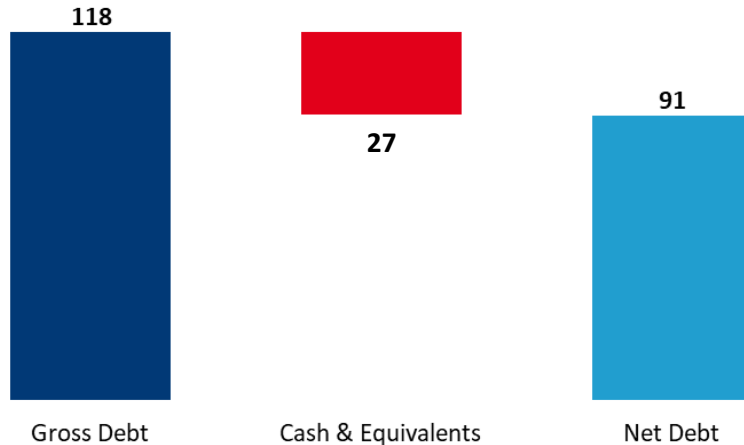
(figures in INR mn)

Particulars	Kamalanga		Warora		Solar	
	Q3FY2025	Q3FY2026	Q3FY2025	Q3FY2026	Q3FY2025	Q3FY2026
Total Income	6,974	6,522	4,871	4,640	91	92
EBITDA	2,698	1,454	1,239	1,299	77	76
Interest	1,341	1,101	568	519	9	7
PAT	546	(1,763)	281	1,790	31	33
PAT (excl. exceptional items)	546	167	281	368	31	32
PLF %	82%	83%	86%	84%	13%	12%
Net Debt	26,346	19,737	23,027	20,796	177	158

	9MFY2025	9MFY2026	9MFY2025	9MFY2026	9MFY2025	9MFY2026
Total Income	22,360	21,471	15,000	13,896	274	270
EBITDA	8,349	7,052	4,865	4,236	239	231
Interest	3,989	3,821	1,680	1,570	27	24
PAT	1,923	4,521	1,717	2,602	98	110
PAT (excl. exceptional items)	1,923	1,338	1,717	1,377	98	110
PLF %	84%	85%	82%	83%	13%	12%
Net Debt	26,346	19,737	23,027	20,796	177	158

Gross & Net Debt

(in INR bn) ^



- Gross Debt increased by INR 2.1bn QoQ
 - Smart Meter Gross Debt increased INR 1.6bn QoQ
- Net Debt decreased by INR 10.0bn QoQ
 - ~INR 11.4bn received from Haryana DISCOM post positive judgment from Supreme Court on 8 Sep'25

Note : ^ As on 31 Dec'25

Net Debt (Sector-wise)^

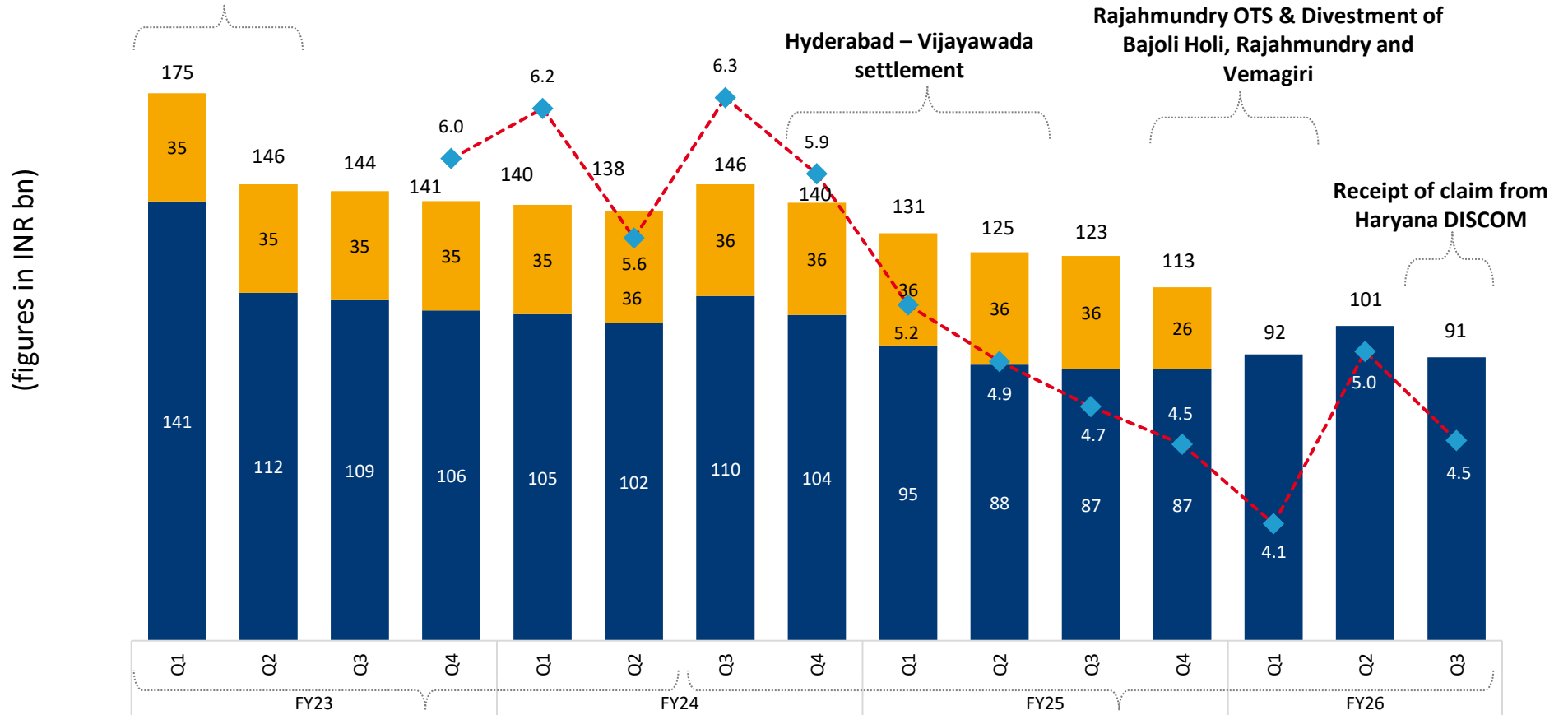
Net Debt (INR bn)	Q3FY2026
Energy Assets	38.6
Energy Holdco	16.4
Energy Segment	55.0
Smart Meter	9.0
Highway Assets	4.2
Highway Holdco	3.3
Highway Segment	7.5
Corporate	16.8
SEZ	2.2
Others	0.2
Total	90.8

Finance Cost Breakdown (INR mn)	Q3FY2025	Q2FY2026	Q3FY2026
Cash Finance Cost	3,303	3,526	3,584
Other Finance Cost (Non-Cash)	340	934	209
Total Reported	3,644	4,460	3,792

Significant reduction in Net Debt (incl. JVs) over last 3 years

Divested 30% equity stake in PT Golden Energy Mines Tbk

■ Proforma Net Det ex. Bajoli Holi and GREL ■ Bajoli Holi + GREL -◆- Proforma Net Debt / LTM EBITDA



GMR Energy (GEL) not consolidated
 Added net debt of major GEL entities, Bajoli Holi and Rajahmundry to arrive at proforma total GPUIL net debt

GMR Energy (GEL) consolidated in GPUIL Financials
 Added net debt of Bajoli Holi and Rajahmundry to arrive at proforma total GPUIL debt

Note : Net Debt numbers prior to Q1FY25 exclude FCCBs issued to Kuwait Investment Authority which were converted into equity shares as per corporate announcement dated 10 Jul'24

ENERGY BUSINESS



Kamalanga Power Project



GMR Kamalanga Energy Limited

Dhenkanal, India

Operational since: April 2013

Fuel Type: Coal

Q3FY26

- **Total Income** ▼ 6.5% YoY to INR 6.5bn
 - PLF at 83% vs. 81% in Q2FY26 and 82% in Q3FY25
 - YoY decline due to lower other income as Late Payment Surcharge no longer required to be recognized
- **EBITDA** ▼ 46% YoY to INR 1.45bn
 - Other expenses include one-time expenses
 - EBITDA margins at 22% (▼ 17% YoY)
- **PAT** Loss was INR 1.8bn vs PAT of INR 0.55bn in Q3FY25 (this incl. exceptional loss of INR 1.9bn arising from re-alignment with Supreme Court order)
 - Excl. exceptional items, PAT ▼ 69% YoY to INR 167mn

9MFY26

- **Total Income** – INR 21.5bn; ▼ 4% YoY
 - PLF at 85% vs. 84% in 9MFY25
- **EBITDA** – INR 7.1bn; ▼ 16% YoY
 - EBITDA margins at 33% (▼ 4% YoY)
- **PAT** at INR 4.5bn vs INR 1.9bn in 9MFY25 (this incl. exceptional gain of INR 3.2bn)
 - Excl. exceptional items, PAT ▼ 30% YoY to INR 1.3bn

Warora Power Project

GMR Warora Energy Limited

Warora, India

Operational since: March 2013

Fuel Type: Coal

Q3FY26

- **Total Income** – ▼ 5% YoY to INR 4.6bn
 - PLF at 84% vs. 73% in Q2FY26 and 86% in Q3FY25
 - YoY decline due to lower average realized tariffs
- **EBITDA** ▲ 5% YoY to INR1.3bn
 - EBITDA margins at 28% (▲ 3% YoY)
- **PAT** at INR 1.8bn vs INR 0.28bn in Q3FY25 (this incl. exceptional gain of INR 1.4bn arising from reversal of provisions)
 - Excl. exceptional items, PAT ▲ 31% YoY to INR 368mn

9MFY26

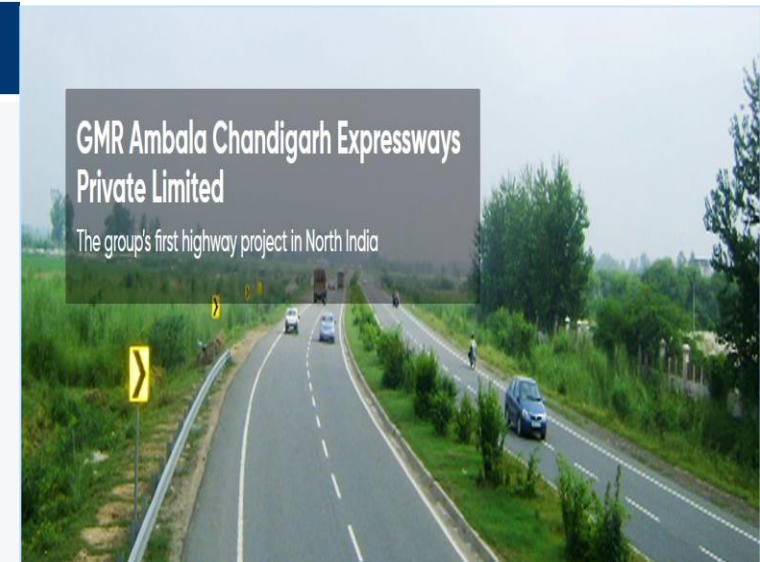
- **Total Income** – INR 13.9bn; ▼ 7% YoY
 - PLF at 83% in 9MFY26 vs 82% in 9MFY25
- **EBITDA** – INR 4.2bn; ▼ 13% YoY
 - EBITDA margins at 30% (▼ 2% YoY)
- **PAT** at INR 2.6bn vs INR 1.7bn in 9MFY25 (this incl. exceptional gain of INR 1.2bn)
 - Excl. exceptional items, PAT ▼ 20% YoY to INR 1.4bn

TRANSPORTATION AND URBAN INFRASTRUCTURE BUSINESS (T&UI)



Ambala Chandigarh Project

- Average Daily Traffic – Q3FY26: ▼ 15% YoY; ▲ 11% QoQ. 9MFY26 ▼ 17% YoY
- Claim against reduction in traffic due to diversion on alternate routes
 - NHAI¹ has filed Special Leave Petition (SLP) in Supreme Court challenging Delhi High Court Judgement on referring the entire dispute to denovo arbitration
 - Denovo arbitration will be proceeded upon the outcome of SLP
- Compensation from NHAI on account of nationwide implementation of annual pass facility w.e.f. 15 Aug'25
 - Executed a Supplementary Agreement to the concession agreement with NHAI for recurring compensation arising from the nationwide annual pass implementation effective 15 Aug'25, payable weekly till the end of the concession period



Pochanpalli Project (GPEL)

- Delhi High Court (Single Bench) upheld the Company's interpretation on the frequency of Major Maintenance
- The said Judgement has been challenged by NHAI in the Division Bench of Delhi High Court.
- Meanwhile, the company has initiated discussion with NHAI for amicable settlement of all pending disputes and both parties have agreed to refer these matters to Conciliation Committee of Independent Consultants for amicable settlement.



¹ National Highways Authority of India

Highway Assets – Financial Performance



(figures in INR mn)

Particulars	Ambala - Chandigarh		Pochanpalli		Chennai ORR	
	Q3FY2025	Q3FY2026	Q3FY2025	Q3FY2026	Q3FY2025	Q3FY2026
Total Income	356	270	220	177	185	131
EBITDA	251	167	139	102	100	50
Interest	63	69	121	99	167	146
PAT	1	(58)	(6)	(14)	(70)	(97)
Avg. Daily Traffic ('000)	50.3	42.6	-	-	-	-
Net Debt	856	537	850	405	4,629	3,312

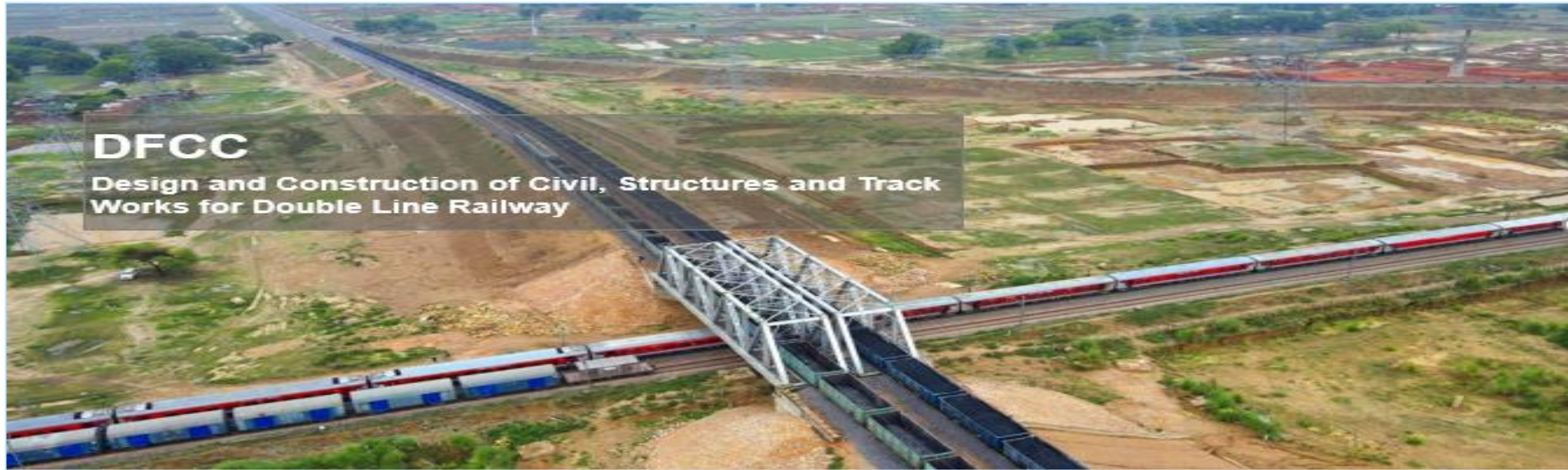
	9MFY2025	9MFY2026	9MFY2025	9MFY2026	9MFY2025	9MFY2026
Total Income	1,030	740	772	656	610	497
EBITDA	770	445	435	349	321	184
Interest	185	204	279	237	515	463
PAT	(14)	(190)	86	57	(203)	(281)
Avg. Daily Traffic ('000)	48.9	40.7	-	-	-	-
Net Debt	856	537	850	405	4,629	3,312



Krishnagiri Special Investment Region: ~387 acres^

- ~32 acres under discussion for sale to an agency of Tamil Nadu Govt.
- Next phase of development being planned for ~60 acres
- 20 acres leased to Industrial Client
- Industrial cluster catering to electronics, automobile, logistics, engineering and aerospace sectors

Note : ^ As on 31 Dec'25



GMR's Scope and Highlights

- GMR along with JV partner has been awarded contract to construct a part of the DFC Eastern Corridor of ~450 km
- Project is funded by World Bank

Current Status

- Project completed and handed over to DFCCIL
- Construction of all sections complete and sections are fully operational

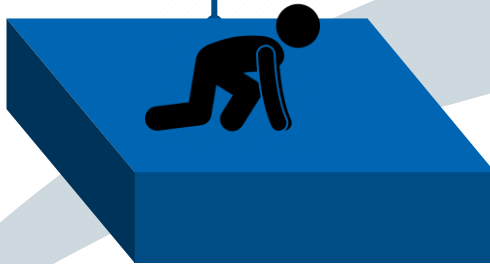
GMR's Scope	Contract Package
Mughalsarai to New Karchana	201
New Karchana to New Bhaupur	202

Prolongation Claim Under Arbitration	INR Cr
Total claim	2,324
Claims considered from above as of 31 Dec'25	506

STRATEGY AND WAY FORWARD



GPUIL: Today



- Conventional Energy
- Highways and EPC
- Urban Infra
- Smart Metering

GPUIL 2.0



Immediate Focus

- Smart Metering
- Smart Mobility
- Conventional Energy
- + adjacent businesses like energy trading, efficiency
- Continue with T&UI Initiatives

Future Focus

- Renewable Energy
- Focus on C&I and Hybrid / FDRE supply
- T & UI
- Explore Suitable Investment Opportunity

Up to 2024

FY 2025 and Beyond...



Solutioning across the end-to-end value chain

Conventional & RE

Conventional

- Brownfield expansion – 350 MW

Renewable

- Solutions for C&I
- Hybrid / FDRE* supply

Smart Distribution

- Smart metering
- Distribution models:
 - ✓ Distribution franchise

Smart Mobility

- EV fleet and energy replenishment solutions:
 - ✓ EV charging – focus on fast DC chargers
 - ✓ Fleet electrification

Adjacencies

- Energy efficiency
- Energy trading

• GPUIL is rightly positioned to transition into identified verticals:

- Nearly **3 decades of presence** in power sector across various sources of energy generation
- **Strong management team** with in-house project mgmt., O&M, policy advocacy and stakeholder relationship management capabilities
- **More than a decade experience** in energy trading – can be capitalized for the transition to GPUIL 2.0
- **Group synergies** – Airports, being a hub for fleet owners and cab aggregators, will augment the quick growth for EV charging initiatives

Within these themes, inroads have been made in smart metering and EV charging

* Firm and Dispatchable Renewable Energy

Clearly Defined Strategies to Capitalize on the Attractive Industry Prospects

Energy

- Maintaining high operational efficiencies in existing energy assets
- Focus on implementation of Smart metering business as well as participating in the upcoming smart metering opportunities
- Refinancing initiatives at Warora to mobilise cash flows for growth and de-leveraging
- In Renewable & EV Charging infrastructure - Target potential opportunities in airports and other sectors

Highways

- Expedite receipt / settlement of pending operational and litigation claims

Krishnagiri SIR

- Take up current development & monetization efforts
- Target Industrial players in electronics, automobile, logistics, and engineering sectors

EPC

- Explore growing the order book
- Participation in Railway EPC/PPP opportunities

Overdue Accounted Receivables

- **Overdue accounted receivables of INR ~7.1bn***
 - Energy: ~INR 1.9 bn
 - Highway: ~ INR 0.25 bn
 - DFCC: ~INR 5.0 bn

* Excluding claims under litigation

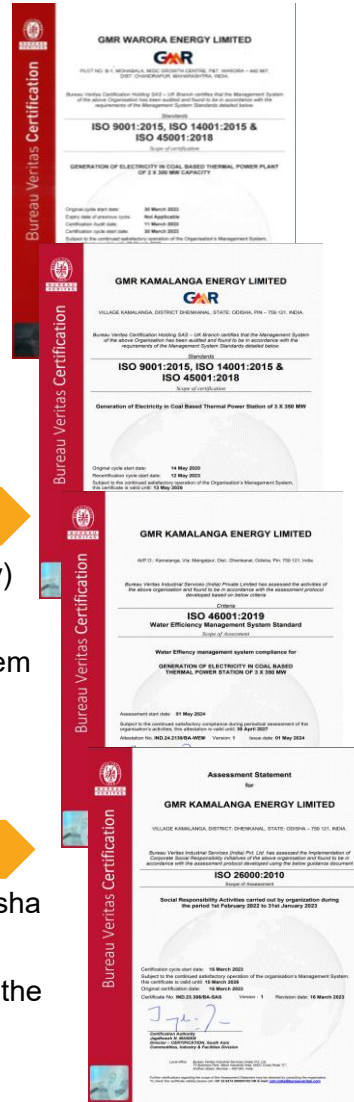
ESG PRACTICES



Robust Management Systems

Management Systems at Warora and Kamalanga Power Plants:

- **ISO 14001:** Environmental Management System
- **ISO 50001:** Energy Management System
- **ISO 46001:** Water Efficiency Management System
- **ISO 14064:** GHG emissions accounting
- **ISO/IEC 27701:** Privacy Information Management System
- **5S Certification:** from National Productivity Council in 'Pradarshak' Category



Warora

- Honoured with **Sarvashreshtha Suraksha Puraskar** (Golden Trophy) and **Safety Shield** at the NSCI Safety Awards 2025
- Achieved **5-star rating** in National Safety Council Safety Rating System assessment
- Received **Energy Efficient Unit Award** at CII's National Award for Excellence in Energy Management

Kamalanga

- Awarded the prestigious Environment Excellence Award 2025 by Odisha Pollution Control Board
- Received with **Platinum rating for water management** in the 'within the fence' and 'beyond the fence' categories by CII
- Received **Energy Efficient Unit Award** at CII's National Award for Excellence in Energy Management

ESG Highlights

Environment

Policy

In alignment with GPUIL and energy sector, EHS Policy being implemented across smart metering operations

Emissions Reduction

- In addition to 25 MW solar unit in Gujarat, 642 KWp and 70 KWp capacity of solar rooftop installed at Kamalanga and Warora, respectively
- Reducing value chain emissions by maximizing fly ash evacuation through rail
- Over 300 MWh of energy sourced through captive solar units for internal consumption

Energy Conservation

- In line with Ministry of Power's PAT (Perform, Achieve and Trade) requirements, 6,000+ Energy Saving Certificates to be issued for Kamalanga and 3,000+ for Warora for the recent PAT cycles

Water Efficiency

Implemented water efficiency measures to maintain consumption 30% below the sector benchmark of 3.5 m³/MWh for power plants

Waste Management

- ~ 100% of fly ash utilization / diversion from landfill; externally assured for zero waste to landfill
- Installed Biomass Pellet Machine at Warora, with a capacity of 100 Kg/hr for converting horticulture waste into biomass pellets

Biodiversity

- Over 33% greenbelt providing rich and dense biodiversity and emission containment at major assets
- Kamalanga power plant completed the Wildlife Management Plan and initiated wildlife awareness programme across 50 schools in Dhenkanal District

Social

Corporate Social Responsibility

- CSR initiatives across education, healthcare and livelihoods positively impacted about 30,000 individuals
- Celebrated **Daan Utsav** under the theme '*Kindness Goes Viral*', across locations with 1,225 employee volunteering hours towards community service
- GMR Varalakshmi Foundation received **Rotary National CSR Award** in Community and Skill Development category for Southern Region, recognizing its youth skilling efforts

Governance

Values & Compliance

Strict governance principles through guided values and all the secretarial compliances in place

Internal Audits

Internal audits conducted by Management Assurance Group to enhance accountability and transparency

External Assurance

Independent Third-Party Assurance on BRSR Core parameters reported in Annual Report (BRSR)

Ethics Trainings

Regular training of employees on the GMR Code of Business Conduct & Ethics (COBCE)

Risk Management

Robust risk management framework and governance processes, including SOPs around risk assessment and mitigation

Supply Chain

100% suppliers committed to GMR Supplier Code of Conduct & Business Ethics



Thank You

For further information, please visit

Website: www.gmrpui.com or

Contact: GPUIL-IR@gmrgroup.in

ANNEXURES



Particulars	No.
Profitability Statement (Consolidated)	A
Financial Performance	
▪ Energy Sector (Consolidated)	B
▪ Warora (Standalone)	C
▪ Kamalanga (Standalone)	D
▪ Highways Sector (Consolidated)	E
▪ Smart Meter (IND AS Consolidated and Proforma* - Operating Asset Accounting)	F

Note Some totals may not match due to rounding-off differences * Based on erstwhile Indian Accounting Principles

Annexure A : GPUIL (Consolidated)



INR mn

Particulars	Q3FY2025	Q2FY2026	Q3FY2026	9MFY2025	9MFY2026
Revenue	16,112	18,104	18,690	46,066	53,278
Other Income	1,509	1,117	1,336	3,913	3,587
Total Income	17,621	19,220	20,026	49,979	56,864
Total Expenditure	12,657	14,469	15,002	33,224	41,887
EBITDA	4,965	4,751	5,024	16,754	14,977
<i>EBITDA Margin</i>	<i>28%</i>	<i>25%</i>	<i>25%</i>	<i>34%</i>	<i>26%</i>
Interest and Finance Charges	3,644	4,460	3,792	11,772	12,662
Depreciation	1,392	1,643	1,656	4,517	4,898
PBT before exceptional items	(71)	(1,352)	(424)	466	(2,582)
Exceptional Income / (Expense)	26	10,230	(1,249)	16,061	9,638
PBT	(45)	8,878	(1,674)	16,527	7,055
Taxes	147	(297)	881	490	787
Profit after Tax (PAT) before JVs and Discontinued Operations	(192)	9,175	(2,555)	16,037	6,268
Add: Share in Profit / (Loss) of JVs / Associates	(707)	(224)	956	(433)	733
PAT from Continuing Operations	(899)	8,950	(1,599)	15,604	7,001
Add: Profit / (Loss) from Discontinued Operations	(186)	(3)	(4)	(572)	271
PAT	(1,084)	8,947	(1,603)	15,032	7,272
Add: Other Comprehensive Income (OCI)	(139)	(353)	(18)	(399)	(103)
Total Comprehensive Income	(1,224)	8,594	(1,621)	14,633	7,170

Annexure B : Energy Business (Consolidated)



INR mn

Particulars	Q3FY2025	Q2FY2026	Q3FY2026	9MFY2025	9MFY2026
Revenue	13,167	14,085	13,203	38,803	40,787
Other Income	1,256	945	1,228	3,063	3,182
Total Income	14,423	15,030	14,431	41,866	43,969
Operating Expenditure	10,089	10,871	10,231	28,194	30,974
EBITDA	4,335	4,159	4,201	13,672	12,995
<i>EBITDA Margin</i>	<i>30%</i>	<i>28%</i>	<i>29%</i>	<i>33%</i>	<i>30%</i>
Interest and Finance Charges	2,698	2,740	2,361	7,633	7,666
Depreciation	1,163	1,436	1,422	3,586	4,255
Exceptional Income / (Expense)	(42)	11,042	(790)	69	9,725
PBT	431	11,025	(372)	2,522	10,800
Taxes	108	(343)	812	407	642
PAT	323	11,368	(1,184)	2,115	10,158
Add: Share in Profit / (Loss) of JVs / Associates	(707)	(223)	956	(437)	733
PAT (After share in JVs / Associates)	(384)	11,145	(228)	1,678	10,891

Annexure C : Warora (Standalone) Power Plant



INR mn

Particulars	Q3FY2025	Q2FY2026	Q3FY2026	9MFY2025	9MFY2026
Revenue	4,753	4,100	4,506	14,007	13,357
Other Income	118	308	134	993	540
Total Income	4,871	4,407	4,640	15,000	13,896
Fuel - Consumption	3,056	2,354	2,579	8,328	7,644
Other Expenses	576	666	761	1,807	2,017
EBITDA	1,239	1,388	1,299	4,865	4,236
<i>EBITDA Margin</i>	<i>25%</i>	<i>31%</i>	<i>28%</i>	<i>32%</i>	<i>30%</i>
Interest & Finance Charges	568	519	519	1,680	1,570
Depreciation	295	303	306	889	902
Exceptional Income / (Expense)	0	0	1,422	0	1,225
PBT	376	566	1,896	2,296	2,990
Taxes (incl. Deferred Tax)	95	145	106	578	387
PAT	281	421	1,790	1,717	2,602

Annexure D : Kamalanga (Standalone) Power Plant



INR mn

Particulars	Q3FY2025	Q2FY2026	Q3FY2026	9MFY2025	9MFY2026
Revenue	6,303	6,586	6,339	20,491	19,962
Other Income	671	605	183	1,869	1,509
Total Income	6,974	7,190	6,522	22,360	21,471
Fuel - Consumption	3,220	3,265	3,457	10,469	10,221
Other Expenses	1,056	1,247	1,611	3,543	4,198
EBITDA	2,698	2,678	1,454	8,349	7,052
<i>EBITDA Margin</i>	39%	37%	22%	37%	33%
Interest & Finance Charges	1,341	976	1,101	3,989	3,821
Depreciation	811	873	799	2,438	2,507
Exceptional Income / (Expense)	0	4,943	(1,930)	0	3,184
PBT	546	5,772	(2,376)	1,923	3,908
Taxes (incl. Deferred Tax)	0	0	(613)	0	(613)
PAT	546	5,772	(1,763)	1,923	4,521

Annexure E : Highway Business (Consolidated)

INR mn

Particulars	Q3FY2025	Q2FY2026	Q3FY2026	9MFY2025	9MFY2026
Revenue	621	523	459	3,265	1,511
Other Income	63	106	51	230	226
Total Income	683	629	510	3,494	1,737
Less: Revenue Share	0	0	0	566	0
Net Income	683	629	510	2,929	1,737
Operating Expenditure	288	322	247	962	879
EBITDA	395	307	263	1,967	858
<i>EBITDA Margin</i>	<i>58%</i>	<i>49%</i>	<i>51%</i>	<i>56%</i>	<i>49%</i>
Interest and Finance Charges	291	527	279	1,580	1,283
Depreciation	193	138	160	828	442
Exceptional Income / (Expense)	(1)	43	(35)	13,090	8
PBT	(90)	(314)	(212)	12,649	(859)
Taxes	37	14	14	77	46
PAT	(127)	(328)	(226)	12,572	(904)

Annexure F : Smart Meter



IND AS - Consolidated

INR mn

Particulars	Q3FY2025	Q2FY2026	Q3FY2026	9MFY2025	9MFY2026
Revenue	1,710	2,889	4,330	1,710	9,053
Other Income	8	11	13	12	38
Total Income	1,719	2,900	4,343	1,722	9,091
Operating Expenditure	1,568	2,556	3,884	1,586	8,126
EBITDA	151	344	459	136	965
<i>EBITDA Margin</i>	<i>9%</i>	<i>12%</i>	<i>11%</i>	<i>8%</i>	<i>11%</i>
Interest and Finance Charges	28	203	323	62	657
Depreciation	9	7	8	16	20
PBT	115	134	128	58	288
Taxes	0	27	46	0	83
PAT	115	107	82	58	204

Proforma* - Operating Asset Accounting

INR mn

Particulars	9MFY2026
Revenue	2,768
Other Income	44
Total Income	2,811
Operating Expenditure	809
EBITDA	2,003
<i>EBITDA Margin</i>	<i>71%</i>
Interest and Finance Charges	620
Depreciation	631
Exceptional Income / (Expense)	(6)
PBT	745

*Revenue includes one time recovery of cost of meter and subsequent rentals

* Meter and installation cost assumed as Fixed Asset